



Ripley Town Council



Photo: Mick Cooke

October 2021

Welcome to the October 2021 edition of the Ripley Town Council newsletter. We aim to make Ripley a better place. We will try and help all those who need it, by building and strengthening relationships with individuals, groups and communities. We aim to create a more secure and inclusive Ripley by helping individuals, families and communities to thrive. We will work towards a more fairly shared society seeking to strengthen opportunities for all in education, health, housing, employment, transport, leisure and culture.

THIS CHRISTMAS
Ripley Town Council
 Present

Christmas Light Switch On
 Friday 26 November 2021
 Ripley Market Place from 6.30pm

FREE kids' rides - Carols with Newstead Brass - Father Christmas - Hot & Cold food - Elsa & Olaf from Frozen - the infamous Ripley Waving Snowman returns -
 Live Broadcast from Amber Sound FM **107.2FM**

Family Christmas Market
 Sunday 5th December 2021
 Ripley Market Place 10am - 3pm

FREE carousel rides - FREE face painting - Characters - FREE kids' rides - Gifts, food & drink to buy - Newstead Brass - Ripley School of Dancing - Father Christmas - Star Generation Music

www.ripleytowncouncil.gov.uk

Santa Claus is coming to town!

We are proud to present to you, our festive event line up for this year (subject to Government guidelines, of course).

We have our popular Christmas Light Switch On, Friday 26th November 2021 at 6.30pm and yes, the famous Ripley 'waving' snowman will be back!

We have changed the colour scheme of this year's Christmas lights and will be providing more Christmas trees throughout Ripley and the surrounding villages. We would love to see your homes and businesses decorated with Christmas lights too.

On Sunday 5th December, we will be holding the Ripley Family Christmas Market where there will be lots of entertainment, food, drink and Christmas gifts to buy.

Father Christmas will also be taking time out of his busy schedule to come along to meet the kids (and big kids) at both events.

We hope to see you there!

Contents: Christmas 2021 · History of Ambergate · Best Kept Garden & Allotment winners · Ripley Town Council events · Butterley Ironworks Trust · Youth Award Winner · Ripley Youth Activities · Amber Valley Local Plan update · Climate Change · Councillor Contact Details

Welcome to Ambergate

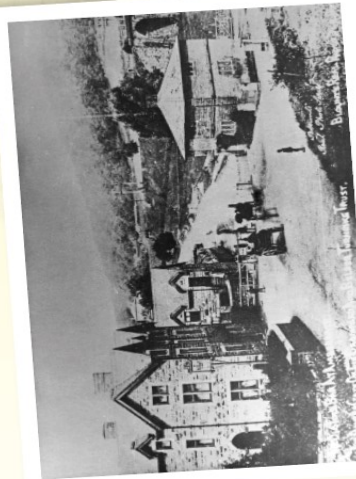


We invite you to read on and find out more about the history of this area.

Ambergate grew from the old Hamlet of Toadmoor, (T'owd moor) mostly through the development of transport links.

For four miles to the north, road, river, canal and rail ran side by side, as they do today.

Cromford Canal, linking mills at Cromford with the rest of the world via canal links from Langley Mill to the River Trent, was built by William Jessop and Benjamin Outram and opened in 1793. The canal, along with the station, also provided a route for the transport of vital minerals to Butterley Ironworks. The canal towpath can be followed to Cromford Wharf, passing High Peak Junction, which is the start of the High Peak Trail. This 6-mile (10 km) section is listed as a Biological Site of Special Scientific Interest and also forms part of the Derwent Valley Heritage Way.



Amber Gate toll bar © picturethepast.org.uk

The village name probably came from the Turnpike Road opened in 1817. Here, a series of tollgates which controlled the junction of the roads to Cromford and Langley Mill were known as the "Amber Gate".

George Stephenson was the engineer for the Derby to Leeds railway and the Francis Thompson designed station opened in 1840. In 1849 the Ambergate to Buxton line opened and led to an unusual triangular station. This opened the Peak District to early tourists and the station was very busy.



Ambergate Station around 1910 © picturethepast.org.uk

With these excellent transport links industry flourished in the area. Francis Hurt's furnaces and iron mills were replaced with wireworks and George Stephenson had opened 20 limekilns by 1840. Limestone came from Crich on a wagonway known as "The Steep". The kilns were demolished in 1966 and replaced with a gas treatment plant.



Ambergate lime kilns around 1950 © picturethepast.org.uk

The coaching inn was built by Francis Hurt in 1874 and bears his name, The Hurt Arms. It took the place of the Thatched House Tavern, demolished by the railway company along with Francis Thompson's original station to make way for expansion. For a time before the church was built in 1891, services were held there. All the stables are long gone to provide space for the more favoured form of transport, the family car.

Further up the A6, on the site of a Francis Hurt foundry, Richard Johnson and his nephew opened a wireworks. Starting in 1867, the company and the business specialised in telegraph wire and suspension cables. It produced the telegraph wires used under the English Channel during WW2. The factory lasted until 1996 when all wire production ceased.



Wireworks canteen

St Anne's Church is separated from the Hurt Arms by the cricket ground. At the side of this, Holly Lane leads down to Halfpenny Bridge which crosses the River Derwent. As the name suggests, anyone crossing was required to pay one halfpenny at the Toll-house. This has been demolished, but the Turnpike Gateposts, (near to the Ambergate Chip Shop which is on Toadmoor Lane), remain as a reminder of that era.



Installed by Ripley Town Council. Written by Jan Fisher, District Heritage Trust for their assistance and information and to all those who have given permission for illustrations to be used. For more information please scan the QR code or visit www.ripleytowncouncil.gov.uk

2021 Best Kept Garden & Allotment competition winners

At a recent meeting of Ripley Town Council, the Mayor of Ripley, Councillor Roland Emmas-Williams, along with Nathan Burrows, manager of Ripley Co-op, presented the 2021 Best Kept Garden and Allotment winners with their prizes of vouchers to spend in the Co-op.

Councillor Emmas-Williams congratulated all the winners and runners up and said that he was impressed with the high standard of entries this year.

We would like to thank Central England Cooperative for their continued support of this competition and for kindly donating the prize vouchers. Thanks also to our independent judge, Caroline Pollard for accompanying the Mayor and Consort to all the gardens and allotments on the day of judging.

We will be creating new categories for next year's competition. We will announce them in a future newsletter.



1st Place Best Garden
Mr. Nigel Wooller from Ambergate won a £60 Coop voucher



2nd Place Best Garden
Mrs. Jill Sellars from Nether Heage won a £30 Coop voucher



3rd Place Best Garden
Mr. & Mrs. Flinn from Ripley won a £10 Coop voucher



1st Place Best Allotment
Anne Caulton-Jones & Brian Caulton from Heage Road Allotments, Ripley won a £60 Coop voucher



2nd Place Best Allotment
Meadow Road Neighbourhood Watch group from Greenhillocks Allotment won a £30 Coop voucher



3rd Place Best Allotment
Stella Chatburn from Heage Parkside Allotment won a £10 Coop voucher

The following competition entries received a Highly Commended certificate:

Heage Parkside Allotments
Patricia Vayro

Heage Parkside Allotments
Sharon Martin

Nuttalls Park Allotment (Pit Lane)
Philippa Hardy

Heage garden - John Cooper

Ripley garden - Nora Mee

The co-operative
Central England Co-operative

2021 Summer Events round up

We have been thankful to be able to bring our community together again for our events this summer.

We kicked our events programme off with the Bands on Crossley Park events in July. Come rain or shine, over 100 of you turned up each week to enjoy an afternoon of toe-tapping music. We give our thanks to you all for attending and to all the bands that came along to entertain us. They were; Pure Steel Band, LickSquid, DogHaus Covers Band, Amber Band, Newstead Brass and Newhall Band.



Pure Steel Band

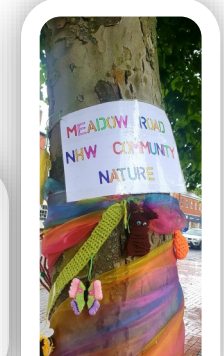


Newhall Brass

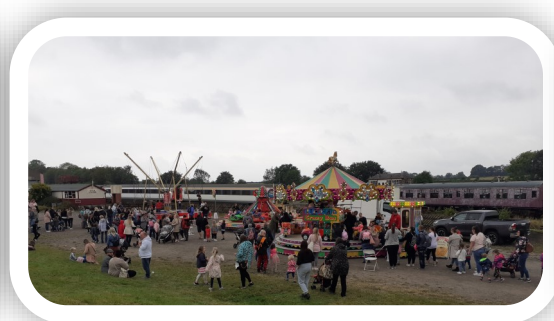


LickSquid

In August, several local groups, businesses and residents once again wool bombed trees in Crossley Park, Ripley Market Place and at All Saints' Church. They brought people to these areas to look at the vibrancy and creativity in the community. We hope you enjoyed them. We will be doing this again in 2022. If you would like to get involved, please get in touch.



Before the local schools went back in September, we held the Ripley's Big Day Out at Midland Railway. A great day was had by everyone who attended. There was lots of entertainment, activities and stalls for all to enjoy. This free event was so popular, we reached full capacity by midday and, disappointingly, we had to turn people away. Lessons have been learned and we will put new procedures in place for the Big Day Out 2022 to ensure our local community are able to enjoy this event.



Unfortunately, we had to cancel the planned Ripley Outdoor Cinema night in September as bad weather was forecast. Don't worry, we will be showing 'Grease' at the event in 2022.

Benjamin Outram's Keystone - 1791

By Tim Castledine,
Ripley & District Heritage Trust

This locally famous stone was for many years held in Butterley Hall, the headquarters of the Butterley Company.

Its existence was last recorded in the Company's Ad Rem magazine of Spring 1952 where it was referred to as *'the original keystone and the most cherished Butterley possession, being housed in the Head Offices'*. In 1968, the Company was taken over by Jim Slater and the Wiles Group. Many of the Hall's valuable contents were auctioned but some just disappeared. One such item was the keystone, and where it ended up remained a mystery for the past 50 years.



During summer 2020, Ripley Heritage Trust was contacted by a former Butterley employee, Mr Tom Denniford of Maidenhead. He had joined the Company in October 1967 as Group Surveyor and Land Agent. At that time, the Group Personnel Officer was Mr Peter Sanders and the two gentlemen kept in contact after leaving the Company.

Following the recent death of Mr Sanders, his stepson, Giles Berry, contacted Mr Denniford to ask if he wanted a stone dated 1791, previously owned by his step father. The stone was in a house in the village of Breinton, near Hereford and the house was up for sale. The stone was duly collected and is now on display in the Town Council's Grosvenor Road office window where it will remain until it can hopefully be permanently displayed in a proposed Butterley Heritage Centre on the former Works site.

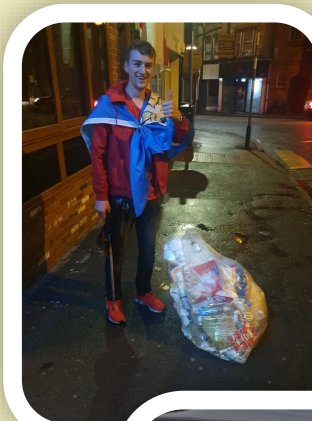
Youth Award presented to local litter picker

A few months ago, we shared a photo on our Facebook page of a young man who spent time after the Euro Football matches, litter picking around Ripley.

That gentleman was James Peacock from Ripley. The photograph of James was shared far and wide and was picked up by local media including BBC Radio Derby and BBC East Midlands, making James a well deserved local celebrity!

The Mayor of Ripley, Councillor Roland Emmas-Williams, invited James along to the recent Big Day Out event where he presented James with a Youth Award trophy, certificate and shopping voucher. (Pictured with the Mayor's Consort, Mrs. Emmas-Williams).

Well done to James - you are an inspiration to many and a credit to our community.



Left: James pictured litter picking late at night in Ripley Town Centre, this summer.



Below: Mayor of Ripley and his Consort presenting James with his Youth Award.

Young People are the future



RIPLY YOUTH HUB Free, fun activities for 11-18 year olds

Ripley Town Council

Lead by qualified, DBS checked Youth Workers from

blend youth project

Wednesdays 5-7pm

AT GREENWICH PARK COMMUNITY CENTRE, NOTTINGHAM ROAD, RIPLEY

Book your place here...

www.ticketsource.co.uk/ripley-youth-hub-with-blend

Places must be booked beforehand as spaces are limited

More info... www.ripleytowncouncil.gov.uk/local-services/ripley-youth-hub

Thanks to funding from:

OFF THE BRAKES

FREE WORKSHOPS FOR 11-18 YEAR OLDS

MUSIC, CREATIVE WRITING, EXPRESSIVE ART WORKSHOPS

WEEKLY SIGN IN ON EVENTBRITE

Available for 11-18 yrs that live in the local area

RIPLEY, HEAGE, BULLBRIDGE, MAREHAY, WAINGROVES, AMBERGATE, SAWMILLS, BULLBRIDGE, LOWER HARTSHAY, UPPER HARTSHAY, HEAGE, NETHER HEAGE, STREET LANE

THE OLD FARM BUS

OLD FARM, WARMWELLS LANE, RIPLEY, DE5 8JB

WWW.THEOLDFARMBUS.CO.UK / THEOLDFARMBUS@GMAIL.COM

Ripley Town Council is proud of our community. We want to make the Ripley Township a safe place for people to live and work. We know how important it is for the young people in our community to have a sense of worth and we want them to take pride in the area that they live in.

Over the past several years, we have created more opportunities for young people to have fun, learn, make new friendships, and enjoy their social life away from education.

We are currently working with two wonderful organisations to provide free activities for young people aged 11-18 years who live in the Ripley Township. The first is Blend Youth. They run the

'Ripley Youth Hub' on Wednesday evenings at the community facility at Greenwich. Here, people can meet up with friends, play games, do crafts, have a bite to eat, listen to music and relax.

Our second activity provider is the Old Farm Bus, based in Marehay. This is a converted American school bus and outside space where young people attend 'Off The Brakes' workshops on Monday evenings. The sessions are based on creative writing, music, expressive arts, and design.

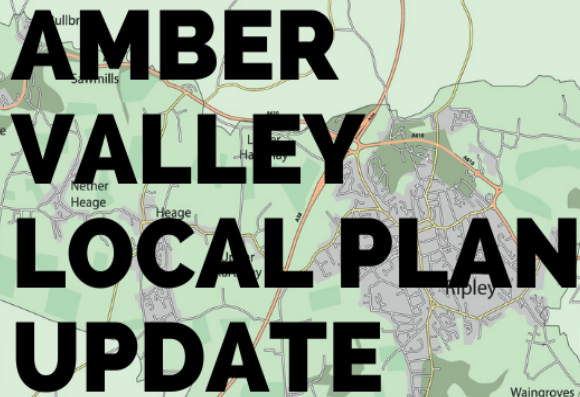
All of these activities are free of charge and can give parents / carers the peace of mind that the young people are left in the capable hands of youth workers /

teachers all with enhanced DBS checks.

During the school summer holidays, we worked with the Derbyshire based organisation, Sporting Communities who provided free sporting activities for young people who live in the Ripley Township. These were also held at Greenwich on Nottingham Road in Ripley. A lot of fun was had by all who attended. Watch this space for information regarding sporty holiday activities in 2022.

We are thankful to the Derbyshire Police and Crime Commissioner for providing us with a grant to enable us to provide these activities free of charge to our young community.





AMBER VALLEY LOCAL PLAN UPDATE

The latest attempt by Amber Valley Borough Council (AVBC) to establish a new Local Plan is now underway. The Local Plan will set out the policies that will govern how and where building development will take place throughout all the Borough – including Ripley - until 2038).

Over the summer AVBC was consulting about the Spatial Policy. This policy will provide the framework for determining all aspects of which areas and sites are to be ear-marked for development. The choice to be made by AVBC is between four broad options (or an amalgam of them):

1. Focus a higher proportion of growth on the edge of and around the Derby urban area - outside the Green Belt

2. Plan for more growth away from the four main urban areas of Alfreton, Belper, Heanor and Ripley and the Derby urban areas with growth in and around a number of villages and other settlements within Amber Valley, outside the Green Belt

3. Plan for one or more new settlements and/or significant extensions to existing urban areas, villages and other settlements - this option would concentrate growth in a limited number of locations within Amber Valley, outside the Green Belt

4. Continue to concentrate most growth in and around the four main urban areas of Amber Valley (Alfreton, Belper, Heanor and Ripley) and on the edge of and around Derby, with more limited growth in and around villages and other settlements - this option would be likely to require amendments to the existing Green Belt boundary, deleting land from the Green Belt for housing or commercial development.

Crucially, the Town Council does not believe that Green Belt boundaries need to be altered in order to secure enough development sites for future housing and commercial needs. We also believe the new Local Plan should take every opportunity it can to maximise the sustainability of development – so we get as close as possible to ‘net-zero’ carbon levels, as quickly as we can.

Consequently, when it considered the four Spatial Policy options presented by AVBC, the Town Council strongly supported that new growth should be around Derby, as per option 1. This is the most sustainable solution, because it places new housing as close as possible to the major centre for employment that Derby is, thus minimising travel needs.

The Town Council will continue to take a keen interest in the developing Local Plan.

THE CLOCK IS TICKING AND OUR CLIMATE IS CHANGING

Ripley Town Council recognises the dangers posed by climate change and accepts there is an urgent need for us all to get to a net-zero carbon footprint. It's easy to say that, but to achieve this will need all of us to adjust how we live our daily lives.

Some things that need doing are out of our control. For example, the speed and extent of public charging points available for electric vehicles is the responsibility of the Government. But some things are within our control.

The Town Councillors understand it's much harder to work out what you – as an individual - can do to help make a difference. But after some research, the ideas below are ones we think everyone can do.

HERE'S WHAT WE CAN DO:

- Aim for a zero food waste household
- Collect and store rainwater for home use
- Invest in energy-efficient appliances
- Take a more sustainable transport route
- Support local farmers and small businesses
- Get a Smart Meter – monitor how much energy you are using in your home and how much it's costing you
- Only boil the water you need
- Turn appliances off when you aren't using them

RIPLEY TOWN COUNCILLOR CONTACT DETAILS



BHIB Derbyshire Council of the Year 2020 & 2018 & Highly Commended 2019

AMBERGATE WARD

Cllr. Christine Worth | 01773 853571 (Lab)
Cllr. Nigel Weaving | 01773 856375 (Lab)

BUTTERLEY WARD

Cllr. Steve Freeborn | 01773 749000 (Lab)
Cllr. Tony Holmes | 01773 742574 (Lab)

CENTRAL WARD

Cllr. Ron Ashton | 01773 745420 (Con)
Cllr. Lyndsay Cox | 01773 742574 (Lab)

EAST WARD

Cllr. Sean Carter | 01773 741600 (Con)
Cllr. Matt Jones | 01773 742225 (Lab)
Cllr. Roland Emmas-Williams | 01773 746543 (Lab)
Cllr. Ian Fisher | 01773 745221 (Lab)
Cllr. Steven Williams | 07837 263344 (Con)

ELMS WARD

Cllr. Matt Allwood | 07426 027184 (Lab)
Cllr. Janis Gregory | 01773 744477 (Lab)
Cllr. Trevor Spencer | 07982 943944 (Con)

HEAGE WARD

Cllr. Tony Harper | 07730 044021 (Con)
Cllr. Paul Lobley | 01773 856874 (Lab)
Cllr. Lynn Joyes | 01773 857320 (Con)

MAREHAY WARD

Cllr. Mick Wilson | 01773 772712 (Lab)

NORTH WARD

Cllr. Paul Moss | 01773 748827 (Con)
Cllr. Matt Murray | 07598 284313 (Con)

WAINGROVES WARD

Cllr. David Williams | 01773 744754 (Lab)

The postal and email address for each Councillor can be found on the Ripley Town Council website.



01773 513456



Ripley Town Council

6, Grosvenor Road, Ripley, DE5 3JF



townclerk@ripleytowncouncil.gov.uk



Mon - Fri
10am - 3pm



www.ripleytowncouncil.gov.uk



Please recycle this newsletter

